

Digital Reference Pressure Gauges TRPG-01

High Accuracy, Precision digital pressure gauges for Calibration, Testing, High accuracy pressure measurement application.

Large LCD screen(50mmX55mm) to view pressure and real time temperature.

Various accuracies and ranges options available as per standards design.

Special Features



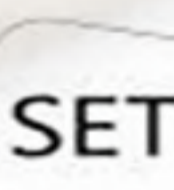



1. Various accuracy options available ranging from 0.2% , 0.1%, 0.05 % FS.
(Note: special accuracy option available for 0.025% FS)
2. Various pressure ranges available from -1 Bar to 1000 Bar (Various models Covering Intermediate ranges.
3. Simultaneous display of Pressure and temperature.
4. Display of maximum and minimum pressure.
5. Large LCD Screen, Size of 50mmX55mm.
6. Multiple units of pressure Bar, mBar, kPa, PSI, MPa, Kgf/cm2, mmHg, mH2O, Torr.
(Note: Some units may be fixed or not available based on pressure ranges.)
7. Resolution 4 Digit.

Technical Specification

1. Pressure Range :
-1 to 1, 1.6, 2.5, 4, 6, 10,1000Bar.
-100, -60, -40, -25, -10,100KPa.
0 - 100 KPa.....1000 KPa(Absolut pressure).
2. Pressure accuracy :
0.2 % , , 0.1%, 0.05% FS.
(Note: special accuracy options available for 0.025% FS).
3. Drift :
±0.1%FS per year.
4. Temperature accuracy :
± 0.7 °C.
5. Operating Temperature :
-10 to 50 °C.
6. Compensation Temperature :
0 to 40 °C.
7. Power :
03 units AA battery or USB Power.
8. Battery Life :
3600 hours.
9. Sampling rate :
1-10 times/ Second.
10. Dial Diameter :
105 mm.
11. Screw thread :
M20 *1.5 G1/4 or customized.
12. Material :
304 stainless steel.
13. Measuring Medium :
Oil, Gas, Liquid(Non Corrosive).
14. Storage Condition :
Temperature : (-20 to 60°C)
Humidity(0 to 95%).
14. Net weight :
260g.
15. Product accessory :
Power Cable 1m, Carry box.

Button Function & LED



-  (Power) Short press to ON/OFF.
-  Short press to open the backlight, Long press to keep the backlight onn.
-  (SET) Short pres two second to enter set function the 'set light' on.
-  Short press to switch pressure unit.
-  Short press to increase; long press to zero clearing.
-  (Decrease) Short press to decrease; long press to clear auxiliary screen record value.



Recommended Accessory



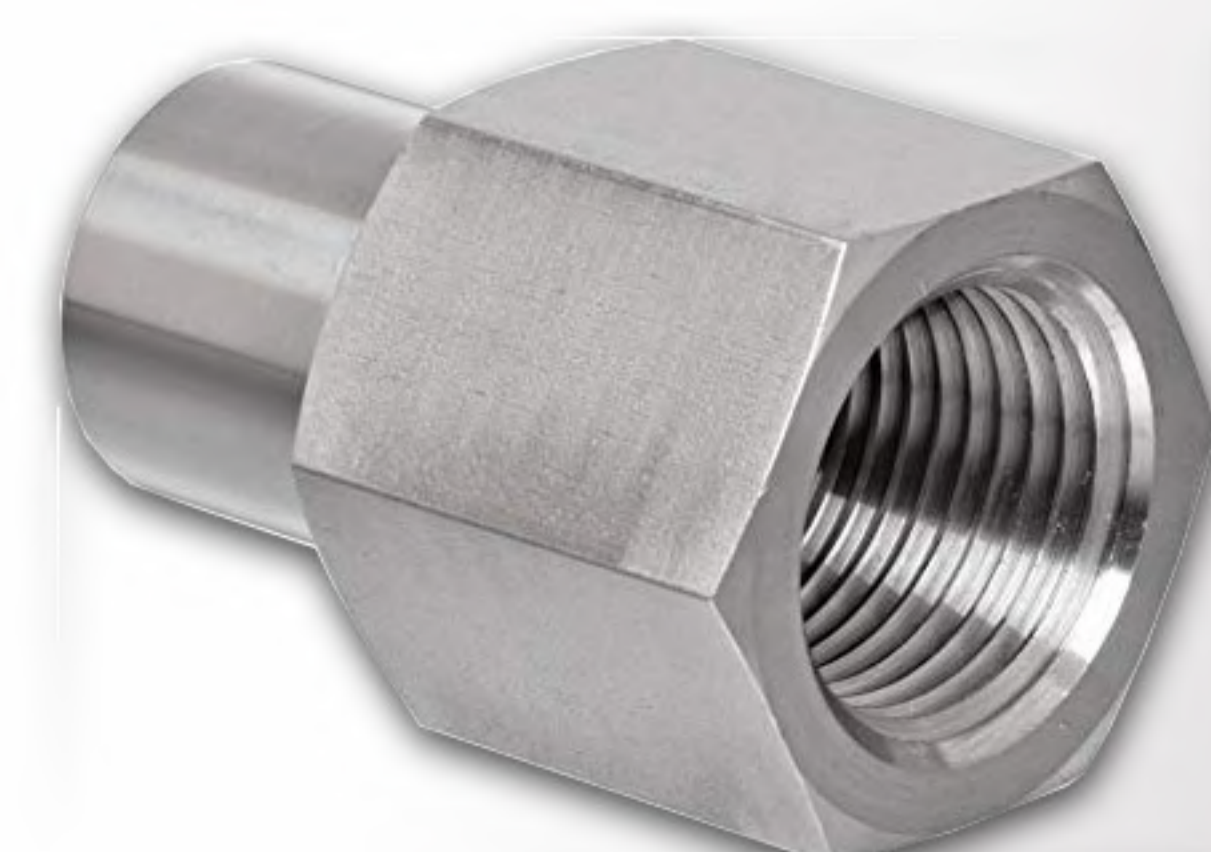
Pneumatic pressure pump
Model TEPS-01
-0.8 to 30 Bar



Hydraulic pressure pump
Model TEPS-02
Range: 0 to 300 Bar/ 600 Bar.



Pressure gauge pointer
Puller.



Set of Adaptors